

# Park Royal Road

Appearance - Materials

20/09/2022

# Appearance - Materials

## Residential Building

Different bricks will be used from the same manufacturer for Building B:

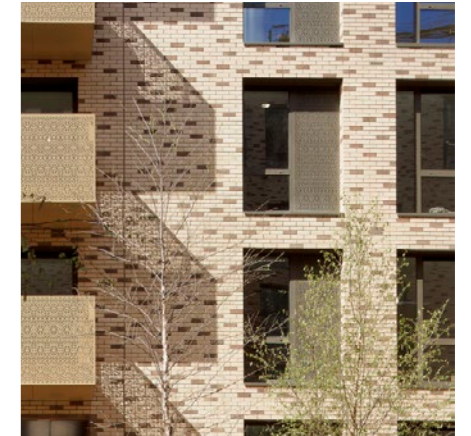
- Hagemeister Ostersund (level O7 terrace parapet)
- Hagemeister Liverpool (entrance and base)
- Mixture of Hagemeister Ostersund and Liverpool 70/30 (main brick)



Ostersund and Liverpool bricks



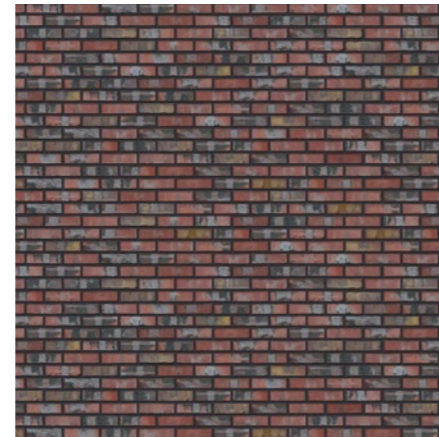
Ostersund + Liverpool brick mix



## Student Accommodation

Building A will combine a 3 level Plinth in brick and an upper part cladded in metal:

- Hagemeister Luebeck (plinth)
- Metal Cladding (upper levels)



Luebeck brick



Metal cladding

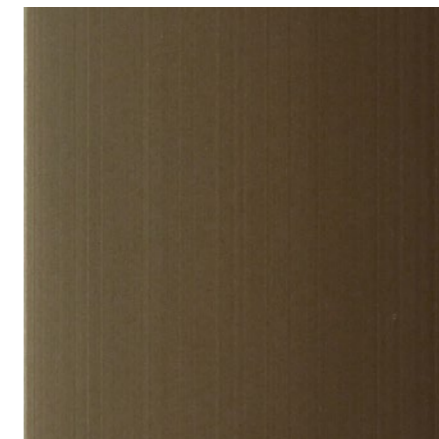


## Supporting Materials

- Architectural concrete (window sills and roof copings of Building B)
- Annodised aluminium/ metallic PPC (window frames of both buildings, as well as in copings and railings)



Concrete



Annodised aluminium / metallic PPC

